



**Grow
your career**

2025/26

Easton College Prospectus



Get the latest ON OUR COURSES

**You will find dates and details for all
our events on our website.**

Visit: easton.ac.uk/events

Open Days

We hold open days each term when you can come along to our campus and see our fantastic facilities, meet our expert teaching staff and get answers to all of your questions.

Campus Tours

Take a tour with one of our Student Ambassadors, explore our facilities and get answers to all of your questions. See our study spaces up close, and get an inside look at what life is like on campus.

Live Chat

Ask anything you like about studying at Easton College. Live chat is available via our website and we have course advisers available for you.

Website

Our website has lots of information from detailed course content to financial help. All your practical questions – from travelling to College to where you can eat on campus – are answered too. A virtual tour of the campus is available to give you a sense of Easton College life.

Follow us on social media to keep up-to-date with what our current students are doing and what's happening around campus.

 @easton_college

 @easton_college

 EastonCollege



Contents

Our College

Three Colleges	6
About us	8
Welcome	10
Your Student Life	12
Ways of Working	16
Study options	18
Maths & English Language skills	20

Support, Advice & Careers

Travelling to College	84
Student accommodation	86
Progression & careers after College	88
Preparing for your future career	90
Supporting your studies	92
Campus map	94

What's Next?

Apprenticeships	78
Degrees & Higher Education	82

More Choice

City College Norwich courses	96
Paston College courses	98
Leisure Learning	100
Professional Development	101
How to apply	102

Courses

Agricultural Engineering	24	Sport	68
Agriculture	28	Uniformed Services	72
Animal Studies	32	Inclusive Learning	76
Construction & Building Services	36		
Environmental Conservation & Countryside Management	40		
Equine Studies	44		
Floristry	48		
Forestry & Arboriculture	52		
Horticulture	56		
Outdoor Leadership	60		
Science	64		

All information is correct at the time of print (August 2024). Visit easton.ac.uk for the most up to date information.

Three Colleges

**Our colleges offer the widest range
of courses in Norfolk...**



A Levels
Art, Design, Photography & Fashion
Automotive
Business, Management
& Administration
Childcare & Early Years
Construction & Building Services
Creative Media
Engineering
ESOL
Games Design & Development,
Digital Art & Animation
Hairdressing & Beauty Therapy
Health & Social Care
Hospitality & Catering
Inclusive Learning
Information Technology
& Digital
Performing & Production Arts
Science
Travel & Tourism

www.ccn.ac.uk



Agricultural Engineering
Agriculture
Animal Studies
Construction &
Building Services
Environmental Conservation
& Countryside Management
Equine Studies
Floristry
Forestry & Arboriculture
Horticulture
Inclusive Learning
Outdoor Leadership
Science
Sport
Uniformed Services

www.easton.ac.uk



Art & Design
Business
Computing
Drama & Theatre Studies
Education & Early Years
English
French
Health & Social Care
Humanities
Inclusive Learning
Information Technology
Law
Maths
Media & Film Studies
Philosophy & Religion
Photography
Politics
Sciences
Social Sciences
Sports
Textile Design

www.paston.ac.uk

**See the course directory at the back of this prospectus for a listing of
all courses offered across our three college campuses.**



Advanced Construction & Engineering Centre (Norwich)

Fully equipped for teaching the skills needed for a low carbon future, the ACE Centre includes a sustainable transport workshop with electric vehicles and the latest diagnostic equipment, including Haas precision engineering machines, and a construction lab.



Animal Management Centre (Easton)

Designed to reflect the latest animal management facilities and practices in zoos and aquariums. Students have opportunities to work with endangered aquatic species thanks to our links with Zoological Society London.



Centre for Excellence in Sport (Easton)

From our Tennis Centre that is used to host professional tournaments, to the latest equipment for testing elite level performance, our Centre for Excellence is set up to give students a head-start in the sports and leisure industry.



Digi-Tech Factory (Norwich)

A unique facility that is purpose-built for teaching the latest digital skills, from coding and hardware to advanced manufacturing, animation and games design, media production, construction and engineering design.



Griffon Theatre (Paston)

Home to our performing arts and drama courses and The Paston Far East Theatre Company, the Griffon Theatre boasts the latest digital sound, lighting and production technology, a cyclorama and movable seating to enable 'in the round' style theatre.



Health Wing (Norwich)

Key features of a modern hospital ward, lifelike simulators provide healthcare students with opportunities to develop their skills in patient care. The Health Wing also has a 3D anatomy visualisation and virtual dissection table, which is one of very few in the country.



International Aviation Academy Norwich

A world class training centre located next to Norwich Airport that is designed to train the next generation of aviation professionals. Its Aviation Emulation Zone® includes a Boeing 737 aircraft for students to practise all aspects of aircraft maintenance.



Construction Skills Centre (Norwich)

Our new centre is equipped with state-of-the art equipment and tools to train the next generation of electricians. The 1,200 m² building has been designed with flexibility in mind and can be adapted in the future as industry demand for different trades evolves.

About us...



Around £2m

invested across a range of projects:
refurbishing the Sports Centre, a new Outdoor
Classroom and investing in our green
technology renewables centre



100+ bedrooms

for Residential students to stay in



**Largest
provider**

of tennis facilities in the region,
home to outstanding indoor
and outdoor courts



Over 60 years

of experience in providing
education in Norfolk



Over 40

courses to choose from in a wide
range of specialist subjects



Unique opportunities

to make you stand out, like our work with Zoological Society London to conserve endangered fish from Latin America



200 hectares

of Norfolk countryside, rich in farmland, woodland, hedgerows, ponds and areas of conservation



Professional standard

facilities for indoor and outdoor sports, equine, animal management and construction



First College

to deliver the new Agriculture Apprenticeship standard in East Anglia



Highly commended

British Horse Society approved yard



Elite sport facilities

3G pitches, new state of the art gym, sports science lab, and classrooms



Welcome

We're here to work with you as you move towards your chosen future. Together, we'll help you achieve your ambitions, and that journey starts here.

We're here to work with you as you move towards your chosen future. Together, we'll help you achieve your ambitions, and that journey starts here.

At Easton College we understand that we are not the end point in your journey. Our students choose us to gain the skills, confidence and qualifications to move on to the next stage in their lives. This could be going on to study for a degree, getting a job and starting out in your chosen career, securing an Apprenticeship place, or simply growing in confidence and independence.

Whatever your aims and aspirations, we are here for you! Everything at our College is set up to help you reach your desired destination. We have expert staff who are not only committed and enthusiastic teachers but who bring a wealth of industry knowledge into our technical and vocational subject areas.

Some of the best facilities in the region

Your learning will take place in superb professional standard facilities, which include working farms, an animal care centre, equestrian centre, our centre for excellence in sport, and Easton College Tennis Centre which regularly hosts professional and amateur tournaments.

Employers from the agricultural sector, and all other areas of our curriculum, play an active part in shaping what and how you learn. You can be sure that when you leave Easton College, you will have had the best

possible preparation for the world of work and invaluable opportunities for high quality work experience along the way.

Gain much more than a qualification

We also understand that you want to enjoy your time at college. Coming to our College is very different to being at school, because you are treated as an adult and given real independence and responsibility for your learning.

With an active Students' Union, on-site cafés to socialise in, and a range of sporting and other extra-curricular activities on offer, there's lots of opportunities to make new friends and have fun!

If you are unsure about what course is right for you, come and talk to us. Our experienced and friendly course advisers are here to help.

If you've not been already, we look forward to welcoming you so that you can discover for yourself all that Easton College has to offer, get a feel for what it's like to study here, and ask us any questions you may have.



Jerry White
Principal

Your Student Life

X @easton_college

Instagram @easton_college

Facebook EastonCollege



Our College will provide you with the skills and experiences you need for your career.

You will study in our stunning 200-hectare campus and develop your skills using our outstanding professional standard facilities and the latest equipment. Our expert teachers will challenge and support you to succeed and you will gain real experience of work as part of work placements with employers.

Industry standard facilities

Our campus is home to some of the best facilities in the region. Over £5m has been invested in recent years to provide you with access to an outstanding learning environment containing the latest facilities and equipment. This includes our state-of-the-art Equestrian Centre, Animal Management Centre, Construction Centre and elite indoor and outdoor sports facilities.

Land-based and more

We have a comprehensive set of courses across the land-based sector but we also offer some interesting alternatives from Public Service to Outdoor Leadership, so you'll be part of a diverse and supportive College.

A brilliant student experience

Easton College provides an environment where you will be treated like an adult and have lots of opportunities to grow and develop your skills outside of your studies.

Gain real experience of work

Our courses will prepare you for your future career by providing you with real experiences of work. You will work with employers as part of work placements and on projects, gaining an invaluable insight into your chosen career. We work with hundreds of local and national employers to ensure our courses give you the skills and knowledge you need to succeed at work.

Whether you want to be at the forefront of our Students' Union, compete in national and international shows or simply continue doing what you enjoy as part of clubs and societies you'll be free to follow your passion and express yourself at Easton College.

We have high expectations and you will be challenged, but at the same time, you'll be provided with all the support you need to help you succeed.

Your Student Life



Gaining a qualification from your time at Easton College is expected, it's our student experience that truly sets us apart.

Easton College provides you with a student experience like no other. Whatever your aims and aspirations, we are here for you!

You will be treated as an adult and given real independence and responsibility for your own learning. There are also useful and practical opportunities for you to develop your skills and experience through paid work, running activities and participating in events.

We pride ourselves on an inclusive student experience, where all are truly welcome. As a student at Easton College, you will join our community where you can access the support and experiences you need to get you where you want to be.

Dynamic & vibrant campus

Set in 200 hectares of Norfolk countryside, our dynamic and vibrant campus boasts fantastic facilities, such as a fully functioning equine centre, animal management centre, construction centre and indoor and outdoor sports facilities.

This provides you with the ideal environment in which to study, explore your interests and develop the skills you need to start an exciting career.

.....

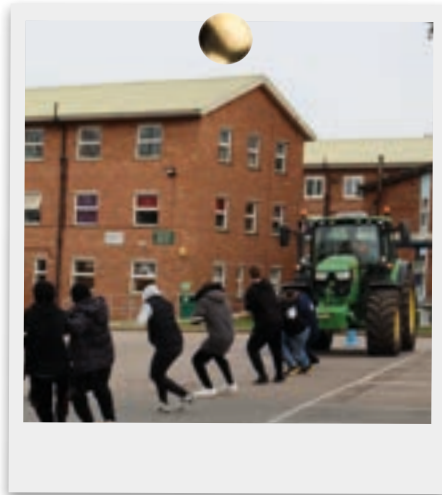
Real experience of work

Our courses will prepare you for your future career by providing you with real experiences of work.

Employers from the agricultural sector, and all other areas of our curriculum, play an active part in shaping what and how you learn. You can be sure that when you leave Easton College, you will have had the best possible preparation for the world of work.

Exciting student life

With an active Students' Union, on-site cafés to socialise in and a range of sporting and other extra-curricular activities on offer, there's lots of opportunities to make new friends and have fun!



Visit: easton.ac.uk/students-union

Students' Union (SU)

Made up of every student at Easton College, City College Norwich and Paston College, the SU is here to support you during your studies.

Once you enrol, you automatically become a member. Throughout your time at College, the SU make sure that you enjoy your time with us and that your voice is represented.

Led by students, you are at the heart of everything they do. Our SU can provide you with opportunities to create your own clubs and societies.



There will also be opportunities to represent your peers at Student Parliament.

Our team holds and takes part in regular events, including the Freshers' Fair as well as running internal elections and awareness events. You can participate in a variety of student groups, societies and associations.

Your Student Life

Ways of Working

As a student of our College you will be expected to make a commitment to study in line with the College's Ways of Working, which current students and staff strive to put into practice each day.

Our Ways of Working ensures the College community provides a welcoming, open and positive experience for all students and staff. You will receive more information during your induction.

We are...



Kind &
Curious



Open &
Informative



Respectful
& Fair



Collaborative
& Inclusive



Consistent
& Responsible



Study options

No matter what grades you may have when you leave school, we will have the right course to help you get the career you want.

Not sure what type of course to choose? We have lots of study options that will help you progress to where you want to be.

Take a look at our options and find the best route for you.

Vocational & Technical Route	T Level Route	Apprenticeship Route
Hands-on courses that allow you to focus on one subject to develop the practical, academic and life skills you need for your future career.	Two year Level 3 technical programmes that combine classroom study with on-the-job training as part of an industry placement that will last at least 315 hours with an employer.	Ideal if you want to work while you study to gain the skills, knowledge and experience you need to get in to your chosen career.
Level 3 ▲	An excellent alternative to other courses and ideal for those looking to start a career or progress to university-level study.	Degree ▲
Level 2 ▲		Higher ▲
Level 1		Advanced ▲
		Intermediate

Please note that some courses may require additional subjects or evidence of experience.



New for 2025 !

Alternative Academic Qualifications provide meaningful and practical learning experiences across a range of career sectors.

They will equip you with the applied knowledge, skills and personal attributes you need to enter and thrive in higher education or employment.

English Language & Maths skills

English Language and Maths are the most fundamental skills a young person can have not just for work, but for life. In order to help you achieve success now, and in the future, we will ensure you continue to make progress with these skills throughout your programme of study.

Whatever grades you achieved in your GCSEs, your programme of study at Easton College will include opportunities for you to develop and enhance your English Language and Maths and skills.

You will be supported to reach your full potential in classes that build on your prior attainment.

Use the guide opposite to find out how English Language and Maths will be built in to your studies:

4

I've achieved grade 4 and above in GCSE English Language and/or Maths

You will continue to develop your skills as part of your chosen course(s).

1-3

I've achieved grade 1-3 in GCSE English Language and/or Maths

You will take either GCSE or functional skills in English Language and/or Maths.

0

I don't have GCSE English Language and/or Maths

You'll be enrolled on to a GCSE or Functional Skills programme at an appropriate level.

GCSE English Language

English language and literacy are highly valued skills in both education and employment. It is about being able to effectively communicate, confidently articulate and express your thoughts, as well as actively listening and understanding other viewpoints. Therefore, they are an essential part of your programme of study and your future progression plans.

.....



GCSE Maths

Maths and numeracy skills are a central part of your programme of study. It isn't just about knowing how to carry out calculations and getting the right answer; it is about improving your skills in recognising problems, finding possible solutions and communicating your reasoning. Therefore, they are an essential part of your future progression in education and employment.

.....



Functional Skills English Language & Functional Skills Maths

English Language and Maths are essential qualifications that give you a range of skills for life. If you have gaps in your subject knowledge that need further development before progressing to GCSEs, then Functional Skills courses are a great starting point. They focus on developing the core skills needed, as well as highlighting the relevance of English Language and Maths in real life situations.

These qualifications are available at different levels to support your skills development and understanding. They provide a secure foundation to aid progression within both education and employment.

“ I found English at school very challenging, dull and I dreaded every lesson. Thanks to my tutor and her teaching techniques - which must have been honed over years - I now have a real passion for the subject and a far greater respect for writers and the many ‘tricks’ they employ.”

Courses

Agricultural Engineering

Agriculture

Animal Studies

Construction & Building Services

Environmental Conservation & Countryside

Management

Equine Studies

Floristry

Forestry & Arboriculture

Horticulture

Outdoor Leadership

Science

Sport

Uniformed Services

Inclusive Learning

Apprenticeships

Degrees & Higher Education



Agricultural Engineering

Modern farming is increasingly reliant on advanced technology. In an ever-changing, fast-paced industry, stay ahead of the curve with our agricultural engineering courses.

You will gain an understanding of the workings of land-based machinery. This includes the servicing and maintenance of farming machinery from 4x4s and quad bikes to tractors and advanced technical equipment.

What will I do?

You will learn about the design, construction and improvement of farming equipment and machinery through hands-on and theoretical learning. Taught by industry expert teachers, you will hone your mechanical, mathematical and practical skills and gain real work experience with employers in the industry.

Progression

Our courses offer progression to Apprenticeships or employment in a wide range of careers within the land-based engineering industry ranging from maintenance to design and development.

You can also progress on to higher level study via our T Level courses including the opportunity to study degree level courses and Higher Technical Qualifications.

Is it suitable for me?

If you enjoy understanding how things work, problem solving, and have a keen interest in engineering and technology, agricultural engineering could be for you.

Exclusive facilities

We have a blend of workshops:

Welding workshop: Students learn the basic skills of Mig and Arc Welding. Used for fabrication of parts for project work gives students a chance to practise their welding skills.

General workshop: Used to teach Hand and Fabrication skills. We have a variety of engines for practice stripping and repair. We also have electric lighting boards for basic electrical theory.

Fabrication practical sessions: Enables students to develop their skills, making items from engineering drawings to a set tolerance and using hand and power tools.

Electrical Board sessions: Students create a basic lighting system, they will use their mathematical skills to calculate fuse rating, cable size required and total power output of the system.

Engineering workshop: Replicates an Agricultural Engineering workshop. We carry out service and maintenance tasks on project machines and real time service and repairs on the college assets. Students use the real time nature to develop their understanding of farm machinery and appliances, develop diagnostic and problem solving skills and return machines to an operational standard in a set time frame.



Cameron

Studied: **T Level Transition
Land Based Engineering**

What next: **Level 3 Land Based Engineering**

“ I have enjoyed learning to weld the most on this course. The teaching and support are very good and staff have encouraged me to better my engineering knowledge. The course has showed me that I have the skills to pursue this career and do well for myself. ”

Enrichment opportunities

Students can expect to be working “hands-on” with a range of machinery, alongside trips to local industry to experience real world situations.



Employer links

We have a close relationship with many of the big dealerships in our region. If you go to one of the branches in our region you will find former Easton College students working successfully within them. We have strong links with Thurlow Nunn Standen (TNS), and over the last 5 years we have had at least 15 TNS apprentices complete the Level 2 Diploma in Land-based Technology as a foundation year prior to their AGCO Apprenticeship. We have a high percentage of our Level 2 Students go into the engineering industry, a majority of whom work in the Land-based Industry.

Courses we offer

Level	Course	Entry Requirements
Level 2	Diploma in Land Based Technology	4 GCSEs Grade 3-9, to include English and Maths at Grade 3.

What can I do next?



Level 2

T Level Transition Land Based Engineering



Level 3

Land Based Engineering Apprenticeship



HTQs

HNC in Engineering-Mechanical Engineering (HTQ)

HNC in Engineering-Electrical and Electronic Engineering (HTQ)

Industry Standard Facilities

Learn in our engineering workshops using advanced machinery and technology.



Careers

Agricultural Engineer
£25-45k+ per year

Agricultural Engineering Technician
£23 -38k+ per year

Service Technician
£18-38k per year

Technical Sales
£20k-52k per year

Machinery Design /Development
£22-45k per year





Agriculture

Explore a career and sector which will help you to understand and manage the land around you; this will develop your understanding of how we grow and manage food supplies, conserve our natural environment, and feed the nation.

Embedded within our commercially managed farm estate, the College practises a mixed farming system integrating cattle, sheep, combinable, root and forage crops alongside habitat and wildlife enhancement, into a sustainable farm system. Interwoven theory and practical sessions will help you develop an understanding of the agricultural industry from livestock and crop production to animal health and business management. You will learn about new approaches to farming and will have the opportunity to work alongside leading employers in the agri-tech sector.

What will I do?

A combination of theory and practical sessions will be delivered on and around our 200-hectare operational commercial farm, consisting of arable fields, grazing meadows and woodlands. With cattle and sheep on campus along with a range of combinable, root and forage crops, you will gain hands-on experience of crop husbandry, farm management and animal husbandry.

You will also have exposure to the commercial realities and decisions experienced within a commercial environment and the opportunity to participate in many aspects of the estate's operational activity.

There will be a range of opportunities to participate in farm operations which will develop and enhance your skills covering land management, machine operation, livestock and crop husbandry, precision agriculture, countryside management and health and safety.

Progression

Our courses provide direct progression routes to higher level study with our Level 3 courses providing the opportunity to study degree level courses in related subjects such as agriculture and agricultural management.

You can go into a range of agricultural careers including becoming a farm manager, tractor operator, stock person and agronomist.

Is it suitable for me?

If you have an interest in science, nature, working with animals, business, technology and machinery and want a career that makes a real difference, agriculture could be for you.

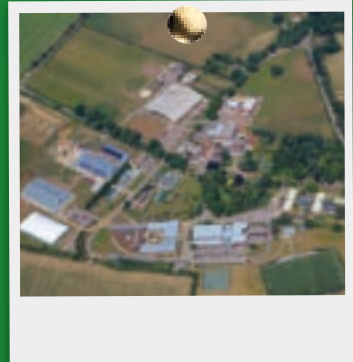
Industry standard facilities

Our Agricultural courses are embedded within our commercially managed Farm Estate.

The College practises a mixed farming system integrating cattle, sheep, combinable, root and forage crops alongside habitat and wildlife enhancement, into a sustainable farm system.

The use of innovative management techniques, based on science and data relevant to current industry approaches, shape the management and operations of all aspects of the farm and estate.

Our approach gives students exposure to the commercial realities and decisions experienced within a commercial environment and the opportunity to participate in many aspects of the estate's operational activity. Students participate in farm operations which as part of developing and enhancing skills covering land management, machine operation, livestock and crop husbandry, precision agriculture, countryside management and safety, throughout the academic and farming year.



Lauren

Studied: **Level 3 Extended Diploma in Agriculture**

" The college is close to home. I have been able to carry on working around my studies and look after my horse. I have enjoyed working with the sheep and beef cattle. I have liked the hands-on practical experiences best. My course leader and lecturers have worked hard to support me throughout my time at the college. They are passionate about the vocation and care deeply about my success and future aspirations. I have always been interested in agriculture. I enjoy being outside and working hands on. I hope with the experience I have learnt from college that I can pursue a career working with livestock and go onto university to study Agriculture."

Enrichment opportunities

We offer many enrichment opportunities and attend many events during your time on our courses. These include:

Lincolnshire Agricultural Machinery Manufacturers Association (LAMMA), Doe Show, Royal Norfolk Show, Guest speakers, European Youth Ploughing Championships in Estonia, Shuttleworth College – Red Poll Show competition alongside college sporting teams and activities.



Industry specialist teaching team

The Agriculture team have had long and successful careers in the industry our students are aiming to work within.

Courses we offer

Level	Course	Entry Requirements
Level 1	Land Based Studies	A minimum of 3 GCSEs at Grade 2 or above.
Level 2	Agriculture	4 GCSEs at Grade 3 or above, including English and Maths.
Level 3	Agriculture	4 GCSEs at Grades 9- 4 including English, Maths and Science.

What can I do next?



Level 1

Diploma in Land Based Studies



Level 2

Technical Certificate
in Agriculture



Level 3

Technical Diploma in
Agriculture

Technical Extended
Diploma in Agriculture



Apprenticeship

General Farm Worker
Level 2

Real working environment

Learn on our operational
commercial farm covering
200 hectares.



Careers

Agronomist

£22-60k+ per year

Farm Manager

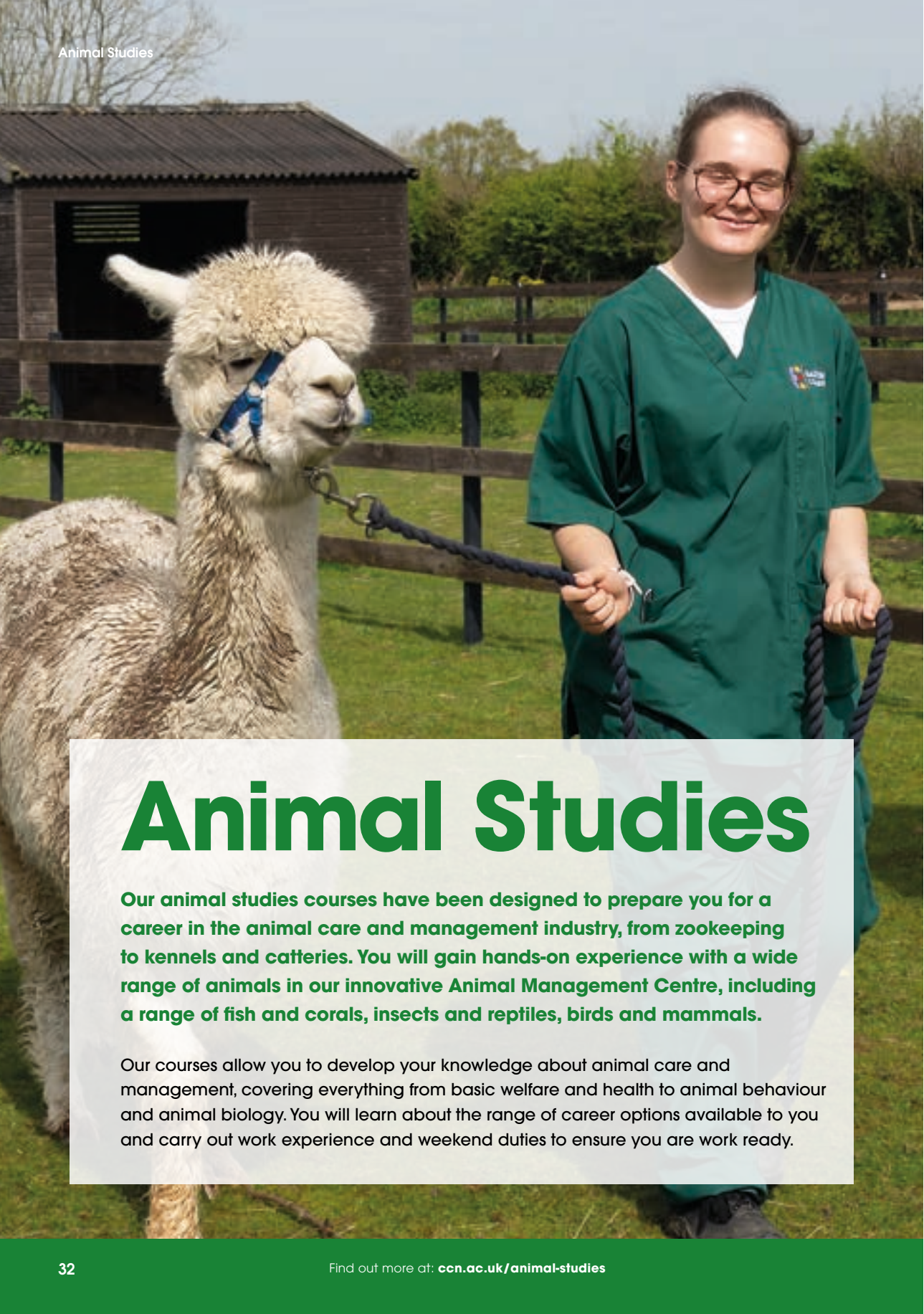
£50-70k+ per year

Tractor Driver

£16-30k+ per year

Farmer

£21-50k per year



Animal Studies

Our animal studies courses have been designed to prepare you for a career in the animal care and management industry, from zookeeping to kennels and catteries. You will gain hands-on experience with a wide range of animals in our innovative Animal Management Centre, including a range of fish and corals, insects and reptiles, birds and mammals.

Our courses allow you to develop your knowledge about animal care and management, covering everything from basic welfare and health to animal behaviour and animal biology. You will learn about the range of career options available to you and carry out work experience and weekend duties to ensure you are work ready.

What will I do?

Studying in our modern Animal Management Centre set in our impressive estate and grounds, you will develop theoretical knowledge, gain practical experience, and explore the principles of animal health and welfare.

You will also care for a variety of animals including small mammals, reptiles, birds, aquatics, and farm livestock, gaining the essential skills required for your chosen career.

As part of this course, you will carry out duties on some weekends and take part in work experience throughout your studies.

Progression

You can progress to higher level study with our Level 3 courses, including degree level courses at Easton College in related subjects such as animal science, wildlife and conservation, and zoology.

Our courses also prepare you for a variety of careers in fields like animal management and zoo keeping. If you aspire to become a veterinary nurse, you can

progress to our Level 3 Veterinary Nursing apprenticeship.

Is it suitable for me?

If you love animals, have an interest in science and want a varied and fascinating career making a difference in the animal industry, our animal studies courses could be for you.

Our new T level in Animal Science will support progression into the veterinary sector, but please check the entry requirements of your chosen vet school. If you need to study A levels, please look at the course options at Paston College.

Employer links

In addition to a wide range of local employers who provide great work experience opportunities, we also work with a range of charities including the Zoological Society of London (ZSL), Cats Protection and the RSPCA. Cats Protection and the RSPCA regularly deliver student talks, and we are working with ZSL to breed critically endangered fish species from South America.

Enrichment opportunities

- Gain hands-on experience – working with a variety of animals in our Animal Management Centre.
- Industry standard facilities.
- Trips to local animal collections.



Exclusive facilities

Our Animal Management Centre is home to a wide variety of species, including critically endangered fish from South America, a range of amphibians, snakes and lizards, as well as a selection of birds and mammals.

Recent developments in the Animal Management Centre include a new Coral Propagation and Marine Fish Breeding System, new zoo style enclosures for our reptiles and invertebrates, new pet shop style exotics room, and developments to our mammal rooms and paddock area.

Students will gain hands-on experience, from feeding and cleaning out the animals, to training, enrichment and handling skills.

The Animal Management Centre uses the Zoological Information Management System (ZIMS) to record data about the species held. ZIMS is used in zoos across the globe and contributes to modern zoo research.

We also utilise SENEYE to monitor our aquatic systems. Our collection is monitored by specialist zoo vets, ensuring our animals are cared for to the highest industry standards.



Enrichment opportunities

Students will get opportunities to visit a range of animal collections, including zoos and public aquariums. Previous trips have included Colchester Zoo, Banham Zoo and Hunstanton Sea Life Centre.

If you study our Level 3 course, you will have an opportunity to travel to South Africa at the end of the academic year to take part in wildlife conservation and community activities.

Courses we offer

Level	Course	Entry Requirements
Entry Level 3	Step into College - Animal	No formal entry requirements. Students must complete a successful interview and assessment to show they can work in a mainstream environment.
Level 1	Land Based Studies (Animal)	A minimum of 3 GCSEs at Grade 2 or above, including Maths or English, or equivalent.
Level 2	Certificate in Animal Nursing Assistants	5 GCSEs at Grade 4, including Science, English and Maths. You will need a 2 week placement at a Veterinary practice.
Level 2	Technical Certificate in Animal Care	4 GCSEs at Grade 3, including Science, plus English and Maths.
Level 3	T Level in Animal Management	4 GCSEs at Grade 4, including Science, English and Maths.
Level 3	T Level in Animal Science	5 GCSEs at Grade 6, including Science, English and Maths.

Interested in vet nursing?

We offer a Veterinary
Nurse Level 3
Apprenticeship.

Visit: [easton.ac.uk/
veterinarynurse](http://easton.ac.uk/veterinarynurse)

What can I do next?

Entry Level

Step into College – Animal

Level 1

Land Based Studies
(Animal)

Level 2

Animal Care

Level 3

Animal Management

Degrees

BSc (Hons) Animal Science

BSc (Hons) Wildlife &
Conservation

BSc (Hons) Zoology



Careers

Zookeeper

£14-25k+ per year

Animal Technician

£17-28k per year

Cattery & Kennel Technician

£14-20k per year

Dog Grooming

£13-20k per year

Veterinary Nurse

£20-31k per year





Construction & Building Services

A large proportion of our economy is in construction, with a vast range of career opportunities in both trade and professional roles. Our courses give you the underpinning knowledge and practical skills to progress onto another course, an apprenticeship or higher education. As part of your course, we will help you to develop your employability skills as well as explore career opportunities in your chosen field.

What will I do?

You will combine theoretical knowledge and practical learning to develop the essential technical skills you need for a career in the construction industry. You will cover practical units in Bricklaying, Plastering, Tiling, Painting and Decorating and Joinery. You will also develop your knowledge of tools and equipment and health and safety.

Progression

Our courses offer direct progression routes to higher level courses. After college, you can go into a job or an Apprenticeship with a small firm or within a larger construction company.

Self-employment can also be an option, either straight away or further down the line.

Once you are working in the construction industry there will be opportunities for you to broaden your skills and pave the way for you to take on more responsibilities – whether that’s for whole projects, construction sites, or major areas of an entire business.

Is it suitable for me?

If you are practical and want to explore developing skills in a range of trade areas, then this course is suitable for you.



Employer links

Employers we currently work with to secure industry placements and enrichment opportunities are Morgan Sindall, LSI Architects, MJS Projects, Pentaco Construction, and Kier.



Demand for jobs

The UK construction industry needs to recruit 43,000 new workers every year.

Fantastic facilities

Our courses are delivered in The David Lawrence Construction Centre, a £3.7m modern and professional learning environment specifically for Construction students. We have several workshops that are set up to cover a range of trade areas such as Plastering, Tiling, Carpentry & Joinery and Bricklaying.



Enrichment opportunities

You will have the opportunity to participate in guest speaker sessions, site trips, and take part in project work.



Courses we offer

Level	Course	Entry Requirements
Entry Level 3	Step into Construction	There are no formal entry requirements. Applicants must attend an interview with our Construction Skills course team and participate in a taster day as part of the application process.
Level 1	Construction Multi Skills	There are no formal entry requirements. Applicants must attend an interview with our Construction Skills course team and participate in a taster day as part of the application process.

What can I do next?

Entry Level

Step into Construction

Level 1

Construction Multi Skills

Level 4

HNC Civil Engineering

HTQs

HNC Construction Management (Construction Design and Build Technician)

HND Construction Management (Construction Design and Build Technician)

HNC Construction Management (Construction Site Supervisor)

HND Construction Management (Construction Site Supervisor)

HNC Architectural Technology

Apprenticeship

Visit easton.ac.uk/apprenticeships to find out more.

State-of-the-art facilities

Our Construction Centre and painting & decorating workshops have the latest equipment.



Careers

Painter & Decorator

£17-32k+ per year

Construction Manager

£27-65k+ per year

Property Developer

Variable



Environmental Conservation & Countryside Management

Choose to learn in a classroom without walls with our land and wildlife management courses. Studying in our diverse 200 hectare estate, there truly is nowhere better to study for a career in the countryside.

You will learn about conservation, biodiversity, ecology, environmental surveys, habitat management and monitoring wildlife. You will also learn to use land-based machinery and undertake estate management.

What will I do?

You will develop theoretical knowledge and a broad range of practical skills in areas related to land and wildlife management. These include environmental conservation of flora and fauna, species identification and estate maintenance.

As part of your course, you will be given the opportunity to take part in work experience to gain an insight into careers in the sector.

You will also contribute to the running of our College estate.

To find out more about this diverse sector, you'll take part in trips and visits to estates managed by wildlife trusts, the National Trust and Broads Authority.

Progression

Our courses allow you to progress on to higher level study with Level 3 study options opening doors to degree level courses, such as our BSc (Hons) Wildlife and Conservation at Easton College.

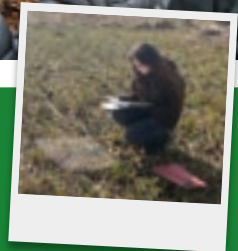
Courses also offer routes to a wide range of Apprenticeships and careers in a variety of roles within the industry such as countryside ranger, gamekeeper, environmental education assistant and trainee ecological consultant.

Is it suitable for me?

If you love the great outdoors and are passionate about conservation and wildlife, our land and wildlife management courses could be for you.

Enrichment opportunities

You have the opportunity to listen to guest lectures and presentations, as well as participate in trips to places such as Blakeney National Nature Reserve, Watantunga Wildlife Park or the annual conservation trip to South Africa with our Animal and Equine students. The College offers regular lunchtime enrichment clubs and activities such as our Game Playing Club, various sports sessions or the recently refurbished college gym.



Liberty

Studied: **Level 3 Environmental Conservation & Countryside Management**

"Level 3 land and wildlife management has acted as a springboard into various opportunities within the field of conservation and land management for me. I currently work at Center Parcs as an Educational Ranger, teaching the public about the wildlife and the landscape. In my free time I also work in deer management and handling, eventually hoping to move towards a career in deer management. Multiple sectors of the course have aided me in getting to this point, and the useful knowledge, practical skills and understanding I have gained have helped me get to this point. I thoroughly enjoyed this course, and would recommend it to anyone with an interest in conservation or management.

Exclusive facilities

A 200 hectare working farm comprising arable, woodland, grassland, water meadows and environmental land management schemes, all of which you will be involved in to develop the skills required for a career in countryside management. We also have access to a multitude of lab equipment, hand tools, machinery that you will learn to use safely and effectively.



Employer links

National Trust work experience placements including Holt Country Park, grounds maintenance, game farms and TCV.

Courses we offer

Level	Course	Entry Requirements
Level 2	Environmental Conservation and Countryside Management	A minimum of English and Maths at Grade 3 or above.
Level 3	Land and Wildlife Management	4 GCSEs at Grade 4 or above including English, Maths and ideally a Science. Alternatively, successful completion of a Level 2 Diploma in Land & Wildlife Management at Merit or above with English and Maths at Grade 4 or above.

Sophia

Studied: **Level 3 Environmental Conservation & Countryside Management**

“ The course has a fair amount of practical work along with theory that I was actually interested in. Our practical sessions could involve walking in the woods or around the farm to see what we could notice about the wildlife and habitats around us. Our second year we had a unit called “Specialist Project” this was where we had to choose a topic of our own to research and present and write a paper on. I looked at the history of raptor persecution within the UK. The course has given me a lot of insight and context to how the conservation/land-based industry works. Currently, I work at National Trust property, but I also volunteer with their rangers once a week. Some tasks I have done recently include fixing and making new stairs in a pathed/sloped area, lots of tree planting, and fixing and restoring (stock) fencing. During this time, I have encountered lots of wildlife, such as mining bees, various fungi like Jelly Ear as well as very intricate sections of lichen and moss. ”



Developed with employers

Our courses have been devised with conservation landowners to ensure you gain the skills you need.

What can I do next?

Level 2

Environmental Conservation & Countryside Management

Level 3

Environmental Conservation & Countryside Management

Access to HE

Land-Based Studies

Degrees

BSc (Hons) Animal Science

BSc (Hons) Wildlife & Conservation

BSc (Hons) Zoology



Careers

Assistant Fisheries Worker

£20-25k+ per year

Trainee Underkeeper

£15k per year

Assistant River Keeper

£18-22k per year

Assistant Conservation Worker

£20-24k per year

Assistant Recreation Ranger

£20-25k+ per year





Equine Studies

Gain the skills and experience needed for a career in the growing equine industry, studying in our state-of-the-art Equestrian Centre. Develop your passion for horses via our groom pathway or riding pathway.

Our courses develop your knowledge in a broad range of areas including horse health and wellbeing, behaviour, biology and grooming. Riding students will develop their flat and jumping skills, whilst groom students will have a focus on competition grooming and will be giving the opportunity to develop their riding skills.

What will I do?

You will explore and develop a wide range of practical skills and theory in equine health, nutrition, horse riding and stable duties. Lessons are a combination of classroom-based sessions and practical sessions in the Equine Centre.

Alongside studying in our professional learning environment, you will gain real experiences of work on a livery, stud or competition yard through work experience that will provide you with an insight into the industry and jobs in the sector. As part of this course, you are required to carry out work experience and yard duties on some weekends.

The Performance and Excellence pathway offers students the opportunity to study the Level 3 in Equine Management, whilst continuing to develop their riding at competition level. Students will have access to competitions in their chosen discipline, strength and conditioning sessions in our Rider Fitness Studio, and additional riding lessons with specialist coaches.

Progression

Our equine studies courses offer direct routes to higher level study in equine science and welfare and land based science.

The East of England has a thriving equine industry and there are lots of careers you can go into. These include becoming a stable manager, trainer, instructor, competition groom or even livery yard owner.

Is it suitable for me?

If you are passionate about horses, hard-working and enjoy working outdoors, our equine studies courses could be for you. Please note successful entry onto the riding pathway requires a riding assessment and is dependent on the carrying capacity of our horses.

State-of-the-art facilities

Our Equestrian Centre is a British Horse Society approved Riding Centre, Livery Centre and Facilities Centre, with Highly Commended status. We host dressage and jumping competitions and events throughout the year, and are host to Norfolk Indoor Driving, as well as the local Pony Club.

Enrichment opportunities

There are a range of trips and visits throughout the year, including visiting Great Yarmouth Racecourse, the National Stud and Redwings Horse Sanctuary.

You will also have the opportunity to assist in the running of events at college and support at the Royal Norfolk Show.



Facilities

Our Equine Centre has been rated as Highly Commended by the British Horse Society (BHS) and includes:

- 70m x 40m indoor arena with first-floor viewing gallery
- 60m x 40m all weather/floodlit outdoor arena
- full PA system directing sound throughout the venue
- internal and external stabling
- a walker that can hold up to 5 horses
- solarium
- rider fitness studio
- cross country training course
- Racewood riding simulator.

In addition to curriculum use, the Equine Centre hosts a range of competitions and clinics.

Students can take BHS qualifications, including the Challenge Awards and the BHS Stages. Training is provided as part of the Program of Study, however entry into the exams is at an additional cost.

We work closely with the British Horse Society, ensuring our facilities and training meet the required industry standards.



Courses we offer

Level	Course	Entry Requirements
Level 1	Diploma in Work-based Horse Care	A minimum of 3 GCSEs at Grade 2 or above, including Maths or English, or equivalent.
Level 2	Equine Care	4 GCSEs at Grade 3, including Science, plus English and Maths.
Level 3	Equine Management	4 GCSEs at Grade 4, including Science, English Maths.

£7bn industry

The UK equine industry is particularly strong in the East of England, with a global reputation for horse breeding



What can I do next?



Level 1

Diploma in Work-based Horse Care



Level 2

Equine Care



Level 3

Equine Management

Equine Management Performance and Excellence



Degrees

BSc (Hons) Animal Science



Careers

Competition Groom

£12-18k per year

Competition Rider

£18k+ per year

Equine Nutritionist

£18-22k per year

Equine Veterinary Nurse

£20-31k per year

Riding Instructor

£14-25k+ per year

Equine Retail

£13-26k per year

Floristry

Immerse yourself in a career capturing the beauty of nature and unleash your creativity with our floristry courses. Floristry is not just about the flowers, for a florist to be successful they need to understand their tools, the environment and the finishing touches that make a difference. You will develop an understanding of design principles and the skills needed to apply these to a design. These courses are ideal if you want to interact with others, be creative and are keen to develop practical floristry skills.

You will develop the plant knowledge and design skills you need for your future career in floristry. Our courses cover much more than floral design and provide you with an overview of the industry and essential management, retail, and customer service skills.

What will I do?

You will learn on our beautiful grounds that are complete with formal gardens. You will explore the floriculture industry and learn important industry skills such as flower conditioning, floral design principles, sustainable and ecofriendly resources, stock management, customer service, plant science, business, marketing and logistics. To gain further insight into the industry, you will gain experience of work as part of a work placement.

Progression

You can progress to higher level study, a T Level, Apprenticeship or employment. Many of our students go on to run their own floristry businesses and there are also roles available in the industry as a florist, flower grower/seller and wholesale assistant. On successful completion of this course, you will be able to progress onto a higher level.

Other careers can lead to working with a team of florists for cruise ships, hotels, specialist in funeral homes, supermarket chain, wedding florist, wedding planner, workshops, trainers and teacher/assessor.

Is it suitable for me?

If you are creative, enjoy nature and design, our floristry courses could be for you.

Purpose-built facilities

You will learn in the purpose-built classrooms on our beautiful grounds that are complete with formal gardens and cutting areas. Our cutting garden and floristry rooms provide the perfect learning environment to nurture your talent.



Enrichment opportunities

During the course students will have opportunities to visit Dutch wholesalers to experience the logistic of flowers coming to the UK from the auction house in Holland, and how they are sold and distributed to floristry business.

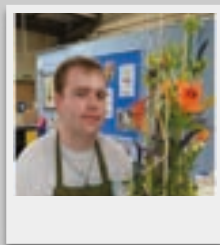
A visit to a UK distributor in South Lincolnshire, learn about British grown flowers and foliage's that are available to florists and their seasons and visit a flower grower to experience the sheer volume of product available, and of course the scent!

We visit a plant seller who will give a talk about plant groups, care and maintenance, Pest and diseases and specialist plants.

Visit a flower farm in Norfolk and explore growing techniques, how to cut and sell to the customers, organic gardening and trends and themes for wedding flowers.

Federation of small business provide a valuable seminar for students entering work/business or self-employment.

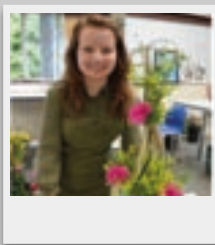
Student case studies



Jack

Floristry WorldSkills competition.

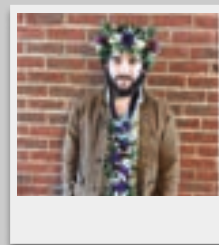
Progressed onto Level 3.



Millie

Floristry WorldSkills competition.

Progressed onto Level 3.



Niall

Glued and wired body adornment.

Employer links

Trip to Evolve Flowers British flower expert and sustainable flower wholesaler in Spalding. Amy Smith Level 2 student demonstrating the wonderful perfume of the Paeonia.



Courses we offer

Level	Course	Entry Requirements
Level 2	Floristry	A minimum of 4 GCSEs at Grade 9-3. Must include English and Maths at no less than Grade 3.
Level 3	Floristry	5 GCSEs at 9-4 or equivalent Level 2 Floristry qualification at Merit or Distinction which must include GCSE Maths and English at 9-4. Evidence of practical floristry experience.



Outstanding working environment

Our cutting garden and floristry rooms provide the perfect learning environment to nurture your talent.

Big business

Floristry is a £2.2bn industry, with over 8,400 UK businesses and 25,000 employees

What can I do next?



Level 2

Floristry

Level 3

Floristry



Careers

Florist

£13-24k+ per year

Gardener

£19-26k+ per year

Landscaper

£20-26k+ per year

A person wearing a red helmet, a grey hoodie, and a harness is climbing a tree. They are using ropes and a climbing device. The background is filled with green leaves and branches.

Forestry & Arboriculture

Discover a vocation in which you truly get to grips with the world around you with our Arboriculture and Woodland Management courses.

You will develop your understanding of Arboriculture, Forestry and Woodland management, growing a mixture of theoretical and practical skills enabling you to follow your future career.

What will I do?

Our hands-on courses are designed to provide you with a wide range of specialist technical knowledge and the skills you need to access a diverse range of employment opportunities within the industry.

You will gain knowledge about the safe operation of equipment, machinery, and chainsaws, as well as working at heights. You'll learn how to plan and execute tree planting and establishment, understand the significance of soil and plant science, and

recognise the impact of pests and diseases. Additionally, you'll develop an understanding of the importance of trees and their associated habitats in both urban and non-urban environments.

Progression

Our arboriculture courses will allow you to progress on to higher level study, with our T Level courses providing the opportunity to study degree level courses in Arboriculture, Forestry and Woodland management or Woodland Ecology and Conservation.

This course also offer routes to a range of apprenticeships within the arboriculture and forestry industries such as with the Forestry Commission, National Trust and the Arboriculture Association. You might want to take on a Wildlife and Conservation degree at City College Norwich.

Is it suitable for me?

If you have a passion for trees, enjoy the outdoor environment, its preservation and protection, Arboriculture could be for you.

Unique surroundings & facilities

Easton campus is set within a 200 hectare estate, featuring woodlands, farmland, an arboretum and links to nearby woodland and other sites of interest.



Enrichment opportunities

A work experience placement to give a real-life experience is part of the course and students will undertake the training that allows them to pursue NPTC awards in their own time.

Student achievement

We have students who go on to university to study Woodland Ecology and Conservation or Forestry at degree level.



Enrichment opportunities

A work experience placement to give a real-life experience is part of the course and students will undertake the training that allows them to pursue NPTC awards in their own time.

Courses we offer

Level	Course	Entry Requirements
Level 3	T Level Tree and Woodland Management and Maintenance – Arboriculture	5 GCSEs at Grade 4, including Maths and English, or a Distinction in a Level 2 qualification in a relevant subject.

Over 90%

of students who complete
the course gain employment
within the industry.



Careers

Forestry Officer

£20-40k+ per year

Tree Officer

£25-40k per year

Ranger

£20-28k per year

Tree Surgeon

£21-34k per year

Forestry Worker

£19-30k per year



Horticulture

Horticulture has a massive part to play in the future of our planet and the living things on it. From the food we eat, the sports we play, caring for the conservation of our environment, and the creation of beautiful spaces for our own human and health & wellbeing.

You will develop your practical skills and technical knowledge in a wide range of areas including planning, planting and maintaining lawns, flowerbeds and essential machinery.

What will I do?

You will learn how to maintain gardens, parks and estates on our 200 hectare campus, honing your skills within walled gardens, polytunnels, glasshouses and landscape construction facilities.

You will study the following units:

- Health and safety for the land-based industries
- Working in the horticulture industry
- Plant naming, identification, selection and science
- Establishment and maintenance of plants outdoors

- Care, maintenance and use of tools and machinery
- Horticulture business skills

Progression

You can progress to higher level study, an Apprenticeship or employment.

The careers within horticulture are varied and range from crop production (fruit, vegetables, flowers, trees & shrubs and glasshouse crops), to landscaping, garden design and sports turf.

The potential is vast if you're ambitious, there is real scope to progress in this industry, have a fantastic, worthwhile, enjoyable career and make a real difference to the future of our planet and the people and creatures who live on it.

Is it suitable for me?

If you are creative, enjoy working outdoors and have a passion for the environment, horticulture could be for you.

Employer and partner links

Our Horticulture team and students have worked with internal partners and external employers to provide food and plants for use in their own business with several students winning local competitions.

Horticultural expertise

Our Horticulture students were honoured to grow some very special seeds that came from a Ginkgo Bilboa tree that survived the dropping of the atomic bomb on Hiroshima in 1945.

The seeds come from a Hibuka tree, called the mother tree, that stands in the Shukkeien Garden in Hiroshima, 1370m from the hypocentre of the atomic bomb, and is thought to be more than 200 years old.

The seeds were gifted to Norwich City Council by the Mayor of Hiroshima to create a lasting symbol of peace.

The seedlings are being nurtured at college until they are ready to be planted.



Outstanding facilities

Easton campus is set within a 200 hectare estate, featuring walled gardens, polytunnels and landscape construction that provides an ideal learning environment.



Enrichment opportunities

You will undertake 150 hours of work experience to enhance your knowledge and experience.



Experienced teaching

Our lecturers have strong professional experience across the horticulture industry.



Courses we offer

Level	Course	Entry Requirements
Level 2	Technical Certificate in Horticulture	4 GCSEs Grade 1-3 or above, to include English and Maths at grade 3; or a Level 1 qualification at Merit/Distinction (including English and Maths at 3 or above).



Careers

Horticultural Manager

£24-34k+ per year

Landscaper

£20-26k+ per year

Landscape Architect

£20-45k+ per year

Forestry Worker

£19-30k+ per year

Gardener

£19-26k+ per year



Outdoor Leadership

Whether you want to become a paddlesport coach, surfing instructor or have an interest in mountain biking, climbing or bushcraft, our outdoor leadership courses could be for you!

Our outdoor leadership courses are designed to ensure you get a mixture of theory and practical hands on experience by giving you an adventure of a lifetime, whilst learning all the skills and knowledge to become an outdoor professional. With specialist equipment and access to Norfolk's stunning waterways, coastline, woodland landscapes, and east coast surf, you will be able to experiment with a variety of water and adventure sports such as sailing, kayaking, surfing and mountain biking to name a few. You will also have the opportunity to develop all your skills in bushcraft, surfing, paddle sport, mountain bike mechanics, with a variety in practical based assessments. You may also undertake a two day bush craft survival assessment, sailing qualifications and qualify as a British canoeing paddle sport instructor.

What will I do?

Our outdoor leadership courses give you access to expert tutoring and support with teachers and coaches who have many years experience in a variety of roles in the outdoor industry including management to Olympic development.

They will guide you to gain practical, technical, and tactical skills that will be invaluable for any career path you choose to follow within the outdoor industry. Our delivery includes Surfing, Bushcraft, Paddle Sport, Mountain Biking, Sailing, Climbing, Windsurfing, Kit Maintenance and Sea Kayaking. All qualifications are

linked to national governing body standards and qualifications.

Progression

You can progress on to university level courses such as BSc (Hons) Sport, Health and Exercise Science at City College Norwich, or a degree in outdoor education.

Studying outdoor leadership gives you access to excellent employment opportunities that have seen our students travel the world and unlock opportunities for self-employment for example:

- PGL
- Outward Bound
- Eaton Vale
- Whitlingham Adventure
- Neilson Holidays

Is it suitable for me?

If you are passionate about the outdoors and want to head toward an outdoor coaching career, like teamwork, leading activities, applying theories to practical situations and want to work in a dynamic and fast paced environment, outdoor leadership could be for you.

Johnny

Studied: **Level 3 Outdoor Leadership**

Currently: **Working on a super yacht and gaining a Skipper qualification**

"In my first year I managed to get a job at Eaton Vale and Whitlingham Lane, This was only possible with the skills I had gained at college, especially my communication skills and leadership.

Throughout my second year I gained National governing body Qualifications. I worked a full summer as a dinghy instructor and paddle sport coach and headed to Chichester University to do a BSc in Adventure Education. After a year in industry I have achieved my dream job in Antigua as crew on a super yacht where I am working toward my Skipper qualification over the next 5 years. I cannot thank the course tutors enough, for making my aspirations a real achievable goal with more support than I ever had at school."



Facilities

Based in a converted Barn that's purposely used for all outdoor learning is the perfect place to feel safe, comfortable and it is extremely versatile in what we can do. From boat maintenance to circuit training, it's a fantastic indoor space with its own classroom. It also boasts its own outdoor learning area with 5 fire pits and unique environment for all outdoor delivery. This coupled with several boat and board trailers make us the ultimate Centre for delivery and learning.

Unique opportunities

- Guaranteed NGB qualifications as well as the NCFE Vocational qualification
- Qualified/ experienced staff with provider status
- NGB recognised in Paddlesport, Surfing and Sailing
- Hands on
- As real as a course can be, no filter needed



In recent years, 100% of our students have secured employment soon after completing their courses with us.

Employer links

We are closely linked with Whittingham Adventure and Eaton Vale who give our students volunteer and work opportunities. We are regular visitors to many of the outdoor centres locally so our students can see the different avenues of the outdoors. A 2-week work experience opportunity also gives the students the chance to work 80 hours in industry with many gaining employment opportunities upon completion.

Courses we offer

Level	Course	Entry Requirements
Level 2	Outdoor Leadership	4 GCSEs at Grade 3 including English Language and Maths. You will also need to be a competent swimmer.
Level 3	Outdoor Leadership	4 GCSEs at Grade 4 or above, including English language and Maths All applicants will be required to swim 200m in 5 minutes.



Careers

Paddlesport /Surfing Instructor

£12-30k+ per year

Mountaineer /Climbing Instructor

£12-30k+ per year

Snowboarding & Skiing Instructor

£12-30k+ per year

Bushcraft & Outdoor Education Provider

Variable

What can I do next?



Level 2

Outdoor Leadership



Level 3

Outdoor Leadership



Degree

BSc (Hons) Sport,
Health & Exercise
Science

Science

Explore and expand your natural curiosity with our T Level Science courses. Our modern laboratories and experienced staff will provide you with all the resources and encouragement you need to get you to where you want to be, whether that's university level study, an apprenticeship or employment.

Our T Level Science course will allow you to develop knowledge of biology, chemistry and physics at an A Level standard with an added focus on industry standard practices and lab techniques.

What will I do?

In T Level Laboratory Science you will gain core knowledge in areas such as health and safety, ethics and scientific practices. You will then specialise in aspects of laboratory science such as atomic structures, genotyping or nuclear physics.

As part of the T Level course, you will complete an industry placement with an employer to develop your practical and technical skills.

Progression

Our T Level Science course will allow you to start a career in laboratory science or health related professions. You can also use them to apply for university level courses in science related subject with a biology, chemistry or physics specialism. A T Level is the equivalent of three A Levels.

Is it suitable for me?

If you're looking to develop a comprehensive knowledge of biology, chemistry and physics alongside work based skills and techniques, our science courses could be for you.

Enrichment opportunities

You will go on placement relevant to the industry you are working in, such as the Sainsbury's Laboratory.

During the course you can expect to engage in the barcoding the broads project with the Earlham Institute.

You will also have regular guest speakers from employers such as:

- CEFAS who spoke about their plethora of international environment projects which had been underwritten by various governments around the world, e.g. looking at fishing quotas, marine conservation areas
- A local company, Solinatra, which works on sustainable alternatives to plastics to come in and deliver a session on 'My Career in Science'
- Continue with Legumes project - leaf education at John Innes
- UEA Biology department for DNA fingerprinting

"The T Level course built up my confidence as a person and offered me a direction in my life. It is nothing like any other course. My work placement at The Sainsbury's Laboratory taught me valuable life skills such as teamwork, the importance of networking with others and making some lifelong friends."

"The best thing about this course is the chance to get on placement. From this you can learn skills which can transfer into other jobs."

"There is a lot of support surrounding everything, including things outside of College and the content is well put together with a clear understanding of what we will achieve at the end of the course."

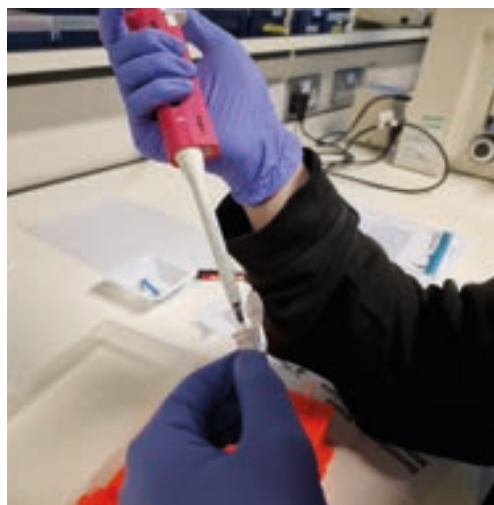


T Levels explained

Studying T Level Lab Science will require you to complete 315 hours of industry-based practice throughout the course. You will be given the choice of a placement in an area of lab science that particularly interests you.

We work closely with the community at the Norwich Research Park to give our students the best opportunities of applying their skills and experience working in modern laboratories.

In the first year, assessment of your knowledge and understanding will be carried out through two core exams and an 'Employer-Set Project'. In the second year, there will be 'occupational specialism' assessments to complete.



Courses we offer

Level	Course	Entry Requirements
T Level	Laboratory Science	5 GCSEs at Grade 4 or above, including English Language and maths. Plus, a minimum of Grade 5 in Science

We work closely with a wide range of Norfolk and Suffolk based laboratories, such as:

- The Sainsbury Laboratory
- John Innes Foundation
- Solinatra
- Earlham Institute
- CEFAS



Careers

Chemist

£26-40k per year

Marine Biologist

£15-50k per year

Biochemist

£24-50k per year



Sport

The British Sports industry is worth £23 billion and holds over 1 million jobs within the UK and is expected to continue to grow.

We will provide you with a deep understanding of sports coaching, sports development, exercise science, fitness and more. Boost your confidence, improve your health and strengthen your career prospects with our Sports courses.

Our courses are designed in collaboration with industry professionals. You will receive an education that aligns with the demands of the sports industry, ensuring that you are well-prepared for the challenges and opportunities that lie ahead.

What will I do?

You will study a wide range of topics including Anatomy and Physiology, Fitness Testing and Training, Sport Leadership, Business, Sport Development and many more.

You will be assessed through a variety of methods including assignments, research projects, presentations, role plays and group discussions.

Our courses are taught by highly experienced staff who bring a wealth of knowledge and expertise to the classroom. They have practical experience within the industry and are dedicated

to helping you succeed. Their guidance, mentorship, and industry insights will enrich your learning journey and provide you with valuable perspectives on the sport profession.

Progression

You can progress from Step Into College through to Level 3 if you meet the progression conditions of the specific course.

You can also progress on to BSc (Hons) Sport, Health and Exercise Science at City College Norwich or other universities, onto an Apprenticeship or into employment.

Is it suitable for me?

If you are passionate about sport and fitness, like teamwork, leading activities, applying theories to practical situations and want to work in a dynamic and fast paced environment, studying Sport could be for you.

New Centre of Excellence

From September 2024, our new Sport Centre of Excellence will give you access to cutting-edge facilities and equipment including:

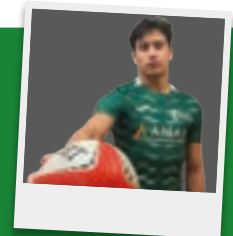
- Fully-equipped Gym, Performance and Conditioning Area
- Indoor Sports Hall
- Indoor Tennis Centre
- Labs for performance analysis and exercise physiology research
- Modern cardiovascular machines, weightlifting stations, and functional training equipment
- Outdoor 3G and grass pitches
- Outdoor Multi-use Games Area
- Outdoor Team Building Stations



Sydney

Studied: **Level 3 Extended Diploma in Sport (Performance & Excellence)**

“ This course has guided me to want to seek a career within the sporting industry. This course proved to me that I can go to university and go further with my studies to gain my goal. Having the support and the right guidance, I have been able to succeed and achieve my goal in starting my BSc in Sport Science and Coaching at Nottingham Trent University. I am the first member of my family to go to university”.



Employer links

Employers provide the opportunity for our students to engage with guest speakers, trips/visits, workshops and work experience. In the past, students have delivered multi skills festivals to primary schools, visited local gyms, and had talks from industry specialists.

Enrichment opportunities

Currently we offer Men's Football, Men's Rugby, Golf and an Individual Performer Pathway (for athletes in any sport looking to develop their own personal performance), but please keep an eye on our website as we look to develop our performance and excellence pathways as part of the growth of the department at Easton College.

Performance & excellence

Performance and Excellence students have full timetable access to the performance fixtures, training and strength and conditioning sessions. These are with specialist coaches to support your personal development and performance.

Students have also taken part in trips to St. George's Park, Twickenham, AoC Sport National Championships (competing and volunteering) and visited a number of universities.



Courses we offer

Level	Course	Entry Requirements
Entry Level	Step into Sport	No formal entry requirements, but please see website for how prospective students will be assessed.
Level 1	Introductory Diploma in Sport	3 GCSEs at Grade 2 or above, including English Language and Maths, or equivalent.
Level 2	Performance and Excellence	4 GCSEs at Grade 3 or above, including English Language and Maths. You must be performing to a minimum of club level with aspirations to participate at the highest level for your ability.
Level 2	Sport	4 GCSEs at Grade 3 or above, including English Language and Maths.
Level 3	Fitness Services	4 GCSEs Grade 4 or above, including English Language.
Level 3	Performance and Excellence	5 GCSEs at Grade 4 and above (including English Language and Mathematics). You must be performing to a minimum of club level with aspirations to participate at the highest level for your ability.
Level 3	Sport Coaching and Development	5 GCSEs at Grade 4 and above (including English Language and Mathematics).
Level 3	Sport and Exercise Science	5 GCSEs Grade 4 or above, including English Language and Maths. Science would be preferable.

What can I do next?

Level 1

Introduction to Sport

Level 2

Outdoor Leadership
Performance & Excellence
Sport

Level 3

Outdoor Leadership
Fitness Services
Performance & Excellence
Sport Coaching & Development
Sport & Exercise Science

Degrees

BSc (Hons) Sport,
Health & Exercise
Science

Elite facilities

Our sports facilities are among the best in the region and include the largest indoor tennis venue in the East of England, 3G pitches and gym and fitness centre alongside first class Outdoor Leadership facilities.



Careers

Personal Trainer

Variable

Sport Nutritionist

£28-43k per year

Sport Physiotherapist

£28-50k per year



Uniformed Services

Our courses will help prepare you for the demanding and honorable roles within the armed forces, emergency services, and other uniformed professions.

Through academic studies, physical training, practical simulations, and insightful mentorship, we will support you to become a resilient, adaptable and compassionate professional who makes a positive impact on society.

What will I do?

You will gain an insight into the various careers within public services, what they involve and personal qualities required so that you make an informed choice for your next step.

You may have the opportunity to take part in residential trips and development days within the armed forces including field craft, assault courses, team activities, workshops and talks.

Our courses are taught by experienced staff who bring a wealth of knowledge and expertise to the classroom.

They have experience within a range of Uniformed Services and are dedicated to helping you succeed. Their guidance, mentorship, and industry insights will enrich your learning journey.

Progression

You can progress from Level 2 to Level 3 if you meet the entry requirements.

Upon successful completion of Level 3, you can progress to university including the BA (Hons) Professional Policing and BA (Hons) Public Sector Leadership (Crime, Strategy

and International Relations) with City College Norwich or other universities.

Is it suitable for me?

If you are solutions focused, keen to develop your leadership skills and are looking to improve the world around you, Uniformed Services could be for you.

Dawson

Studied: **Level 3 Extended Diploma in Entry to the Uniformed Services**

Currently: **Electronic Warfare Specialist in the Royal Navy**

The tutors have real-world experience, making the course engaging, they are approachable and say there is no such thing as a silly question. Their support and humor create a positive learning environment, encouraging us to work hard and participate in every activity. Their guidance and encouragement significantly enhanced my college experience and helped shape my career path. Climbing Mount Snowdon in mid-October for charity was unforgettable, especially with friends. The trip and our time at the hostel were incredibly fun. I also enjoyed various volunteering activities, including two police riot training events, which gave insight into potential future careers.



Employer links

Employers actively engage with our students by providing career talks, practical demonstrations and simulations, trips, visits and interview support. These include Police Public Order and Riot Training, Major Incident Planning with Norfolk Fire & Rescue and Military Skills with the British Army and many more.

New Sports Centre of Excellence

You will be able to take advantage of the newly refurbished Sports Centre, including our sports hall, fully-equipped modern gym and performance and conditioning area, as well as the wider college estate.



Enrichment opportunities

Level 2 and Level 3 students take part in a local multi-day expedition. Our Level 3 2nd year students take part in an Outward Bounds expedition which brings together the skills and qualities developed over the two years.

Strong industry links

Our links with the Police Force, Fire Service, Military, Prison Service and other public sector organisations will give you an outstanding insight into the industry.



Courses we offer

Level	Course	Entry Requirements
Level 2	Entry to the Uniformed Services	A minimum of 4 GCSEs at Grade 3 and above including English Language and Maths.
Level 3	Entry to the Uniformed Services	5 GCSEs at Grade 4 (or equivalent) including English Language and Maths.

What can I do next?

Level 2

Uniformed Public Services

Level 3

Uniformed Public Services

Access to HE

Criminal Justice & Policing

Degrees

BA (Hons) Professional Policing



Careers

Police Officer
£29-46k per year

Royal Marines Officer
£31-57k per year

Criminal Intelligence Analyst
£20-52k+ per year



Inclusive Learning

What is it about?




For many students, coming to college will be a huge step, a step that moves you from childhood to adulthood and which involves many changes, new responsibilities and freedom. It will mean adjusting to changes, making decisions and gaining a greater independence.

Our Inclusive Learning courses are designed to help you plan for the future and progress to your next step. Small bespoke group learning is delivered by a team of dedicated staff across our three campuses.

We recognise the challenges that our Inclusive Learning students face and we ensure that we provide the right level of support and encouragement to meet each individual's needs.

Whilst on our courses, you will have access to a range of teaching methods, resources and facilities that support your learning journey and progression through to adulthood. Progression could be onto further study, pre-employment provision, directly into employment or on to supported living/community-based options.

Depending on your individual needs and aspirations you may spend your time with us all at one campus or you may progress to one of our other campuses to continue your learning journey. Your course leader will work with you and your family/carers to support you to achieve your potential.

-  Delivered at City College Norwich
-  Delivered at Easton College
-  Delivered at Paston College



Courses at Easton are marked in green below.

What can I study?

Whatever you're aiming for, we have a variety of study options for you to help you achieve your goal.

Giving you the skills to do things for yourself and to live with support:

- PAL (Pathway to Adult Life)
- Inspire
- Connect
- Progressions
- Phoenix Purple Independence Pathway
- Get Involved
- Future Choices
- Skills for Life
- Pathway to Independence
- Personal and Social Pathway

Helping you get into paid work:

- General Enterprise
- General Enterprise
- Rural Enterprise
- Retail Enterprise
- Hospitality Enterprise
- Multi Enterprise
- Phoenix Purple Employment Pathway
- Ticket (Norwich, Easton & Paston)
- Work Matters
- MINT

Preparing you for further study:

- Creative Pathway
- Discovery Pathway
- Social & Community Pathway
- Phoenix Purple Vocational Pathway
- Vocational Pathway
- Future Aspirations



MINT is an employment service set up by City College Norwich to support young people (aged 16-25) with learning and employment needs, such as autistic spectrum disorders, mental illnesses, dyslexia, dyspraxia and low self-esteem, to gain sustainable paid employment.

Specialist Employment Job Coaches provide one-to-one support to develop your confidence and employability skills with job applications, interview skills and work experience. They will also help you access training and support to achieve your potential.

Come and see us during our quiet hour, held before our Saturday Open Events.

Book online in advance.



Full course listings at ccn.ac.uk/inclusive-learning



Full course listings at paston.ac.uk/inclusive-learning



Practical Outdoor Learning

Students have various opportunities to work outdoor and off-site.



Work Experience

Students gain work experience in our Bistro alongside a job coach.

 EASTON
COLLEGE

TICKET

Apprenticeships



Apprenticeships provide fantastic career opportunities and allow you to get qualified and earn money at the same time.

If you are aged 16 and over, an Apprenticeship is an ideal option if you want to continue learning while working or kick start your way into employment. You can be any age over 16 and still get funding too!

We work with around 800 employers to provide Apprenticeships in hundreds of industries, from the largest employers in the country through to small, ambitious businesses that are keen to grow.

We work closely with these employers to deliver training both on and off the job. In most cases, you'll come into College one day a week, as well as working alongside experienced staff to receive planned training and development with a dedicated workplace mentor.

94%
stay in work after finishing an Apprenticeship and 47% have received a promotion.



What type of Apprenticeships can I study?

There are four levels of Apprenticeships you can choose from, and the level you do will depend on your qualifications, experience and the type of industry you will work in.

Type of Apprenticeship	Level	Equivalent educational level
Intermediate	2	5 GCSE passes at grades 9-4 or A*-C
Advanced	3	2 A Level passes /Level 3 Diploma /International baccalaureate
Higher	4 and 5	HNC, HND, Foundation degree and above
Degree	6 and 7	Bachelor's or Master's degree

Find and apply for an Apprenticeship



Can't find a vacancy that interests you?

You can also find your own employer to hire you as an apprentice. For more information, visit ccn.ac.uk/how-to-find-an-apprenticeship

Develop skills at work

Gain 'on the job' experience as a paid employee. Develop your knowledge, skills and behaviours.

Get trained

Benefit from 'off the job' training at college to learn new knowledge and skills.

Meet standards set by employers

Gain specific knowledge and skills by meeting standards set by employers.

Get paid to train

Earn a salary whilst developing your knowledge, skills and behaviours.

No debt

Fully funded by your employer and the government so no loans to worry about!

Progress

There are opportunities to progress on to Advanced, Higher or Degree Apprenticeships or be employed as a full time employee.



Current Apprenticeships

For more information please visit easton.ac.uk/apprenticeships

Subject	Level	Subject	Level
Accounts & Finance Assistant	2	Hairdressing Professional	2
Advanced Carpentry and Joinery (Easton College)	3	Healthcare Support Worker	2
Craft Bricklayer (Easton)	3	Healthcare Assistant Practitioner (Health Studies) – Foundation Degree	5
Assistant Accountant	3	Healthcare Assistant Practitioner (Mental Health Practice) – Foundation Degree	5
Bricklayer (Easton College)	2	Higher Apprenticeship Engineering Manufacturing Technician	4
Business Administrator	3	Higher Apprenticeship Engineering Manufacturing Technician - Electrical Electronic	4
Carpentry and Joinery (Easton College and City College Norwich)	2	Hospitality Team Member	2
Chef de Partie	3	Hospitality Supervisor	3
Chartered Manager	6	HR Support	3
Civil Engineering Technician	3	People Professional	5
Construction Management HNC (Construction Site Supervisor)	4	Information and Communication Technician	3
Construction management HNC (Construction Design and Build Technician)	4	Installation & Maintenance Electrician	3
Commis Chef	2	Craft Bricklayer (Easton)	3
Customer Service Practitioner	2	Livestock Unit Technician (Easton College)	3
Data Analyst	4	Motor Vehicle Service and Maintenance Technician (Light Vehicle)	3
Dental Nurse	3	Plumbing and Domestic Heating Technician	3
Multi-Channel Marketer	3	Professional Accounting Technician	4
Early Years Educator	3	Property Maintenance Operative (Easton College)	2
Engineering Operative (Mechanical/Manufacturing)	2	Teaching Assistant	3
Engineering Technician (Machinist)	3	Land Based Service Engineer (Easton College)	2
Engineering Technician - Mechatronic Maintenance Technician	3	Land Based Service Engineering Technician (Easton College)	3
Engineering Technician - Product Design and Development Technician	3	Operations & Departmental Manager	5
Gas Engineering Operative	3	Primary Teacher	6
General Farm Worker (Easton College)	2	Secondary Teacher	6
Craft Carpenter (Easton College)	3	Data Technician	3
Network Engineer	4		





Degrees & Higher Education

Our Degree and Higher Education courses will provide you with the skills and experience you need to develop your career.

.....

We specialise in vocational work focused degree level courses that have been designed with employers and progression in mind.

This means you will be provided with the skills and qualifications you need to progress your career in growing industries.

Working in partnership with one of the UK's top universities

Our College is a Partner College of the University of East Anglia (UEA) a UK top 30 university (The Times/Sunday Times 2024).

This means that Easton College degrees are awarded by the UEA and are of outstanding quality.



Smaller class sizes

Our smaller class sizes mean you get all the support you need during your studies. This is a crucial difference to larger universities and provides you with access to your lecturers when you need them.

Work & study

Our courses are designed to fit around your life and career aspirations. You can study most courses over 1 or 2 days per week so you can continue to work alongside your studies and balance other commitments.

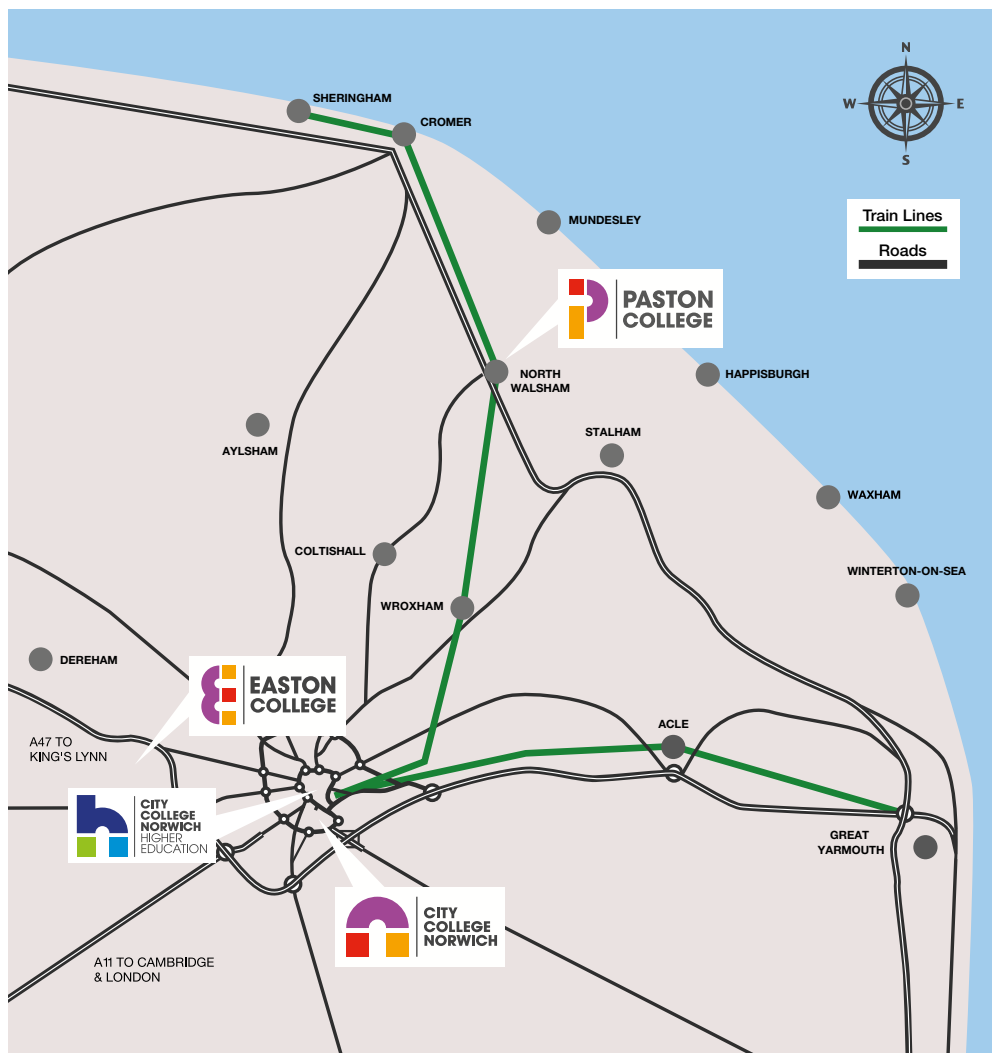




Course type	Course
HNC/Ds	HNC Applied Sciences (Biology) – In development for Sept 2025
HNC/Ds	HNC Civil Engineering
HNC/Ds	HNC Mechanical Engineering (Top Up)
HNC/Ds	HND Embedded Electronic Systems (Top Up)
HNC/Ds	HND Electrical and Electronic Engineering (Top Up)
HTQs	HND Digital Technologies for England – Cyber Security (HTQ)
HTQs	HND Digital Technologies for England – Software Development and Programming (HTQ)
HTQs	HNC Mechanical Engineering for England (HTQ)
HTQs	HNC Electrical and Electronic Engineering for England (HTQ)
HTQs	HNC Construction Management (Construction Design and Build Technician) (HTQ)
HTQs	HND Construction Management (Construction Design and Build Technician) (HTQ)
HTQs	HNC Construction Management (Construction Site Supervisor) (HTQ)
HTQs	HND Construction Management (Construction Site Supervisor) (HTQ)
HTQs	FdSc Health Studies (HTQ)
HTQs	FdSc Mental Health Practice (HTQ)
FdA/BA/BSc	BA (Hons) Additional Needs and Disabilities (Children and Young People)
FdA/BA/BSc	BA (Hons) Childhood and Youth Studies
FdA/BA/BSc	BA (Hons) Childhood Studies (Top Up)
FdA/BA/BSc	BA (Hons) Leadership and Management
FdA/BA/BSc	BA (Hons) Professional Policing

Course type	Course
FdA/BA/BSc	BA (Hons) Psychology with Sociology
FdA/BA/BSc	BSc (Hons) Animal Science
FdA/BA/BSc	BSc (Hons) Sport, Health & Exercise Science
FdA/BA/BSc	BSc (Hons) Wildlife & Conservation
FdA/BA/BSc	BSc (Hons) Zoology
FdA/BA/BSc	FdA Early Childhood Studies (with Early Years Educator Status)
Level 5	Level 5 Professional Aviation Engineering Practice – In development for Sept 2025
Higher & Degree Apprenticeships	CMI Level 5 Operations/Departmental Manager Higher Apprenticeship
Higher & Degree Apprenticeships	Chartered Manager Degree Apprenticeship Higher & Degree Apprenticeships
Higher & Degree Apprenticeships	HR Consultant Partner Apprenticeship L5
Higher & Degree Apprenticeships	Higher Apprenticeship - HNC Construction Management (Construction Design and Build Technician)
Higher & Degree Apprenticeships	Higher Apprenticeship - HNC Construction Management (Construction Site Supervisor)
Higher & Degree Apprenticeships	Higher Apprenticeship – Assistant Practitioner (with FdSc Health Studies)
Higher & Degree Apprenticeships	Higher Apprenticeship – Assistant Practitioner (with FdSc Mental Health Practice)
Higher & Degree Apprenticeships	Professional Accounting Technician Apprenticeship Level 4
Other	Professional Diploma in Accountancy (AAT) L4
Other	CIPD Associate Diploma in People Management L5
Other	CMI Operations / Departmental Manager L5 (non-apprentice route)

Travelling to College



Got a question about travel?

Get in touch with the Travel Plan Officer
at citytravel@ccn.ac.uk
or 01603 773 607

Find out more...

Visit easton.ac.uk/travel for the
most up to date information

Easton College is located just 8 miles from Norwich City Centre and our students travel from all across Norfolk and neighbouring counties.



By bus

There are various direct bus routes to the campus, plus non-direct routes via Norwich from across Norfolk. You can find these on Easton College website under Support and Advice, then Transport. If a direct service is not available, you can get the free shuttle bus direct to the campus from Norwich City Centre. You can catch the shuttle bus from Castle Meadow, Norwich Bus Station, Norwich Train Station or St Stephen's Street.

There are lots of student travel discounts available. We advise that you investigate season tickets offered directly from the operator as these may be cheaper and more flexible than the Norfolk County Council pass.

By train

If you are travelling to Norwich by train, you can catch a free college shuttle bus from Norwich Train Station direct to the campus.

By car

Easton is located just off the A47, behind the Royal Norfolk Showground. From the A47, follow signs to the Norfolk Showground. From here, follow signs to Easton College. There is lots of student car parking available on our campus.

Specialist transport

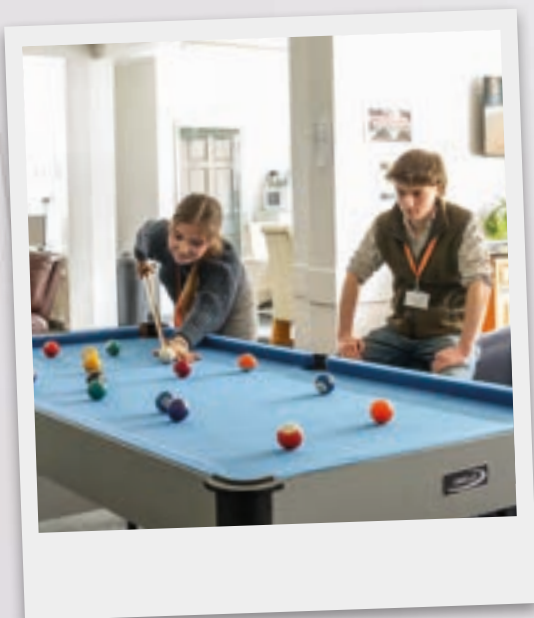
For students with additional needs or disabilities that are unable to travel by bus please contact your local county council for information about specialist transport for post-16 education.

Student accommodation

For full accommodation options and pricing information, visit

easton.ac.uk/FE-accommodation

Easton College is home to welcoming student accommodation that allows you to develop your skills and grow in a friendly, safe and social community in Norfolk's stunning country landscape.



Life in residence at Easton College

Just a few minutes walk from the classroom, field and farm, our accommodation puts you in the best place to live and learn to the best of your potential.

Moving away from home is a big deal at any age, that's why our accommodation provides a safe and caring start to independent living. We understand how important it is to feel safe and comfortable so our friendly team make you their priority to help you settle in quickly and enjoy your independence in safe, welcoming and sociable surroundings.

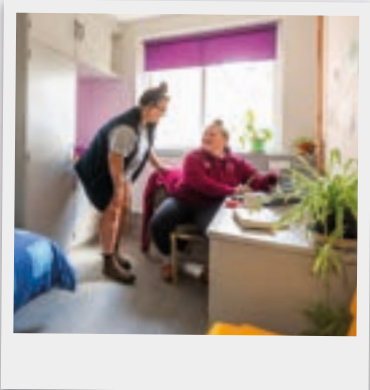
What's included?

We want you to feel at home and relaxed in your own space which is why we encourage you to create your own spaces within your room to help you settle in and enjoy your favourite comforts from home.

Our accommodation is split across 3 blocks with single study bedrooms and shared toilet and bathroom facilities. All rooms are centrally heated at no extra cost and come complete with:

- bed and mattress (bedding, pillows and towels are not provided)
- desk and chair
- wardrobe
- hot and cold tapped sink
- plenty of storage space
- curtains
- waste paper basket
- a single vanity mirror and light
- good sized pin board for organisation.

Accommodation is let on a 5 day fully catered basis with 3 meals per day.



Facilities & activities

Alongside the standard accommodation facilities, we also offer all our residents a range of other facilities and services including:

- free Wi-Fi
- clothes washing and drying facilities
- weekly room clean
- free parking
- a team of Residential Assistants to support with your needs

When you're not studying, we have some excellent facilities to keep you active and entertained including our Tennis Centre, gym and fitness centre and 3G pitch.

We also offer free daily activities and trips away to fun places including paintballing, go karting, swimming, football, tennis, basketball, cooking, film nights and city trips.



Progression & careers after College

We know you come to us because you want to get somewhere.

Whether it's university level study, or a career with amazing opportunities – our courses can help get you where you want to be.

Successful completion of our school leaver courses will open up a whole new world of possibilities for you to consider such as:



Degree level study

Our Level 3 courses have allowed our students to progress on to degree level courses at a number of universities and colleges across the country and overseas.

Students have also chosen to study degree level courses closer to home. Easton College and City College Norwich have a wide range of Degree and Higher Education courses that provide you with the skills and experience needed to develop your career.

Visit easton.ac.uk/degrees or ccn.ac.uk/degrees to find out more.

Employment

Our students have progressed on to a wide range of amazing opportunities with employers locally, nationally and, in some cases, internationally after completing their courses.



Apprenticeships

Apprenticeships provide fantastic career opportunities at all levels and allow you to get a qualification and earn money at the same time.

Easton College and City College Norwich work with hundreds of employers to provide Apprenticeships and Higher and Degree Level Apprenticeships in a variety of specialisms.

Visit easton.ac.uk/apprenticeships or ccn.ac.uk/apprenticeships

Preparing for your future career

Whether it's a specific career, a job with amazing opportunities to travel the world, unlocking the possibilities of higher education, or simply developing all-round and keeping your options open, we can help get you to where you want to be.

Employability & interview skills

In addition to developing course specific skills and knowledge, we will also support you to develop key attributes that are valued by employers. These include communication skills, helping you to become a problem solver, increasing your business and customer awareness, managing your time effectively and helping you to develop a positive, confident attitude.

We also provide opportunities for practice interviews, working on your CV and learning how to go about finding a job. All the advice and support you need to be job ready and successful at interview is right here.



At Easton College we provide you with much more than just a qualification. We work closely with hundreds of employers across every subject area to give you opportunities and experience that will prepare you for your future career.

Experience of Work

We connect students and employers on a regular basis to give you a first hand understanding of what it is like to work in particular industries and job roles.

We work with hundreds of employers to ensure you gain the skills you need to start a career in your chosen industry.

The experience of work you get will depend on your course and level, all students are given opportunities to develop the skills, experience and behaviours that are valued by employers.

Some of the ways in which you could be gaining experience of work with us are:



Industry placements

Regular, ongoing work experience with an employer, which may last for a term or more. Some courses require you to do a set number of hours in order to pass the course.



Work experience

Shorter periods of time spent working with an employer to gain direct experience of job roles you could be doing in the future.



Site & workplace visits

Group visits to relevant employers in your sector take place throughout the year, which could be anything from major building projects (Construction) to prison visits (Public Services).



Employer talks & networking

Employers regularly come into the college to meet with students and talk about what it's really like to work in their sector, answer questions and give you the information you need to successfully realise your career goals.



Solid support whatever your needs

We are passionate supporters of students with learning disabilities or specific learning needs. We offer a range of support services to help you study.

The Curriculum Services team ensure effective and appropriate support is given to students who require assistance.

Once you have applied to study with us, please let us know if you have support needs by emailing us at sen@ccn.ac.uk.

If you need help in your exam please contact spld@ccn.ac.uk.

We care about your future, that's why we have a friendly and professional advice team offering information and support on careers, finance, travel and more.

Our team are here to provide you with the support and advice you need to focus on your studies and make your time with us as enjoyable as possible.



student services

Student Centre

Our experienced advisers in the Student Centre offer expert advice and guidance for students on progression, careers, finance and wellbeing.

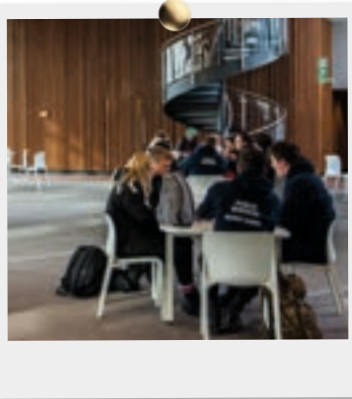
Free drop in advice and guidance is available to our students on the following:

- progression
- careers and employability advice for students
- UCAS and higher education advice
- confidential counselling service
- finance
- travel
- student voice opportunities
- safeguarding concerns
- sexual health and relationship advice and c-card

- signposting for specialist advice from external agencies

For more at information contact the Student Centre at eastoninfo@ccn.ac.uk

Visit: easton.ac.uk/student-centre



Finance

Student funding can seem complicated and daunting, and you may be unsure what you are entitled to.

Our Student Advisers can provide you with clear, accurate and confidential advice about bursaries and free college meals.

To discuss this with a student finance officer, contact **01603 732 389**, or financialadvice@ccn.ac.uk

Visit: easton.ac.uk/finance

Travel

Save on your bus fares with discounted travel for students from Norfolk County Council and First Bus services.

Find out more on page 84.

Visit: easton.ac.uk/travel

Our Campus



Horticulture Glasshouses & Poly Tunnels



Construction Workshops



Animal Management Centre



Floristry Cutting Room



Green Room

Buildings:

- 1** Jubilee Building
- 2** Tennis Centre
- 3** Construction Centre
- 4** Animal Management Centre
- 5** Glasshouse 2 & Poly Tunnel
- 6** Glasshouse 1
- 7** Equestrian Centre
- 8** Veterinary Centre
- 9** Agriculture Engineering Yard
- 10** Easton Hall
- 11** Garnett Building
- 12** Student Accommodation
- 13** Sports Centre
- 14** Duffield Building
- 15** The Barn

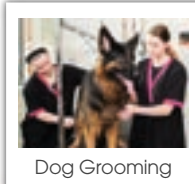
Facilities:

- 3G All Weather Pitch
- Arboretum
- Cafe
- Grass Pitches
- Green Room
- Library
- Multi Use Games Area (MUGA)
- Parking
- Reception
- Toilet
- Walled Garden
- Wetland Habitat 'The Dell'

student services



Equestrian Centre



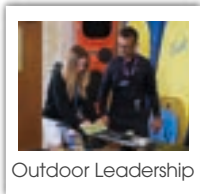
Dog Grooming



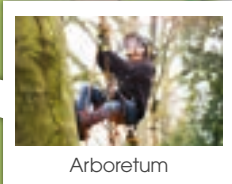
Vet Centre



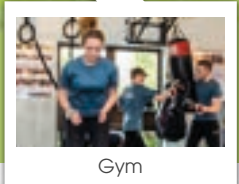
Agriculture Engineering Workshops



Outdoor Leadership



Arboretum



Gym



Inclusive Learning

City College Norwich Courses



Take a look at the exciting options available to you at City College Norwich:

A Levels

Art
Biology
Business
Chemistry
Drama & Theatre Studies
English Language
English Language & Literature
English Literature
Environmental Science
Film Studies
Further Mathematics
Geography
History
Mathematics
Media Studies
Photography
Physics
Politics
Psychology
Religious Studies
(Philosophy & Ethics)
Sociology
Textiles

Apprenticeships

Accounting
Bricklaying
Business Administration
Carpentry and Joinery
Construction Management
Customer Service
Data Analyst
Dental Nurse
Early Years Educator
Electrical
Engineering
General Farm Worker
Hairdressing

Healthcare
Hospitality
Human Resources
IT
Land-Based Engineering
Management
Marketing
Motor Vehicle
Network Engineer
Plumbing
Property Maintenance
Teaching
Teaching Assistant

Art Foundation & Pre Degree

Pre-Degree Foundation Diplomas are designed to provide you with a broad range of skills and experiences prior to embarking on a university level degree:

Art Foundation & The Media Learning Company

Business, Management & Administration

Business
Management & Administration

Childcare & Early Years

Assisting Teaching
Caring for Children
Early Years Educator
Early Years Practitioner
Education and Childcare
Education and Early Years

Construction & Building Services

Bricklaying
Carpentry and Joinery
Design, Surveying and Planning
Electrical
Plumbing

Creative Arts

Architecture and 3D Design
Art & Design
Creative Media Production & Technology
Digital Art & Animation
Fashion Textiles
Fashion, Business and Retail
Fine Art
Games Design & Development
Graphic Design and Illustration
Photography

Engineering

Automotive and Engineering
Automotive Maintenance
Engineering
Light Vehicle Maintenance and Repair
Maintenance, Installation and Repair

ESOL (English for Speakers of Other Languages)

These qualifications are widely recognised by employers and assist with progression into further education, employment and everyday life.

Visit ccn.ac.uk/ESOL to find out more.

GCSEs for 16-18 year olds - Academic Progression

Specifically designed to help you progress on to the next stage of your education and are split into pathways appropriate to your next steps:

Academic Progression 3-4 GCSE Programme
Academic Progression Insight

Visit ccn.ac.uk/gcse to find out more.

Hairdressing, Beauty Therapy & Make Up Artistry

Barbering
 Beauty Therapy
 Hairdressing
 Media Make Up Artistry
 Theatrical, Special Effects & Media Make Up Artistry

Health & Social Care

Health and Science
 Health and Social Care
 Supporting Healthcare - Adult
 Nursing
 Supporting Healthcare -
 Supporting Mental Health

Hospitality & Catering

Cookery
 Hospitality and Catering
 Professional Cookery

Inclusive Learning

These courses help you to progress to your next steps through our bespoke small group programmes.

Visit: ccn.ac.uk/inclusive-learning to find out more.

Information Technology & Computing

Digital
 Digital Production, Design and Development
 Digital Support Services
 Infrastructure

Performing Arts & Production

Acting for Stage and Screen
 Dance
 Media, Broadcast and Production
 Music Performance and Production
 Musical Theatre

Science

Our Science courses are available at Easton College.

Sport & Outdoor Leadership

Our Sport and Outdoor Leadership courses are available at Easton College.

Travel & Tourism

Travel & Tourism

Uniformed Services

Our Uniformed Services courses are available at Easton College.

Discuss your options with our friendly Advice Shop

Our advisers offer free advice and guidance to help you make the right choice.

Contact our advisers in the Advice Shop on **01603 773 773** or information@ccn.ac.uk



Paston College Courses



Paston College has a strong history of high achievement which sees students progress on to university, employment and apprenticeships. We offer expert teaching, guidance and support to help ensure you achieve your aspirations.

Take a look at the exciting options available and choose the right course for you!

A Level programmes

Art & Design - Fine Art
Biology
Business
Chemistry
Drama & Theatre Studies
English Language & Literature
English Literature
Environmental Science
Film Studies
French
Further Mathematics
Geography
Graphic Communication
History
History of Art
Law
Mathematics
Media Studies
Philosophy, Religion & Ethics
Photography
Physical Education
Physics
Politics
Psychology
Sociology
Textile Design

Career focused courses

Level 2 Media Production
Level 2 Vocational Studies
Level 3 Applied Psychology
Level 3 Art and Design
Level 3 Computing
Level 3 Creative Media Production
Level 3 Criminology
Level 3 Health and Social Care
Level 3 Medical Science
Level 3 Sport & Exercise Science

Inclusive Learning

Multi Enterprise
Ticket Paston

T Level

Business
Education & Early Years
Management and Administration:
Team Leadership and Management

Discuss your options with our friendly Advice Shop

Our advisers offer free advice and guidance to help you make the right choice.

Contact our advisers in the Advice Shop at Paston College on **01692 668 080** or **pastoninfo@ccn.ac.uk**





Leisure Courses

More
courses
coming
soon

Explore a hobby, hone a skill, find a passion.

We all have that one hobby or skill we've always intended to try or develop but never quite got around to it. Master the challenge and learn something new with our Leisure Learning courses.

We offer a wide range of part time and evening courses for adults looking to learn something new, develop their practical skills and meet new people.

Whether you'd like to advance in your current role at work, learn how to weld, exercise your creativity or become a dog whisperer – we're sure to have a course to suit you and your interests.

Our courses are delivered by both our in-house expert teaching staff and external specialists to ensure your new hobby has the best possible start.

Courses are held at our stunning campus, ensuring you will be provided with an outstanding learning experience, and access to our state-of-the-art facilities. We also offer courses at City College Norwich.

Find out more at:
easton.ac.uk/adults



Course costs

All courses are priced individually.



Professional Development

Professional Development at Easton College

Our College works with hundreds of local businesses to help them grow and support the development of their workforce.

We deliver a wide range of training courses and qualifications for both businesses and individuals who want to improve their skills or retrain in areas including agriculture, horticulture, floristry and sports coaching. Courses are available to study during the day and as evening classes allowing you to fit your studies around your life.

You will be taught by expert teachers in our outstanding industry standard facilities. Many of our courses are accredited by industry or professional bodies. This means you gain essential professional qualifications that are valued by employers.

We pride ourselves on offering courses that are flexible and tailored to your business needs. We also offer options for bespoke training solutions.

Course costs

All courses are priced individually.

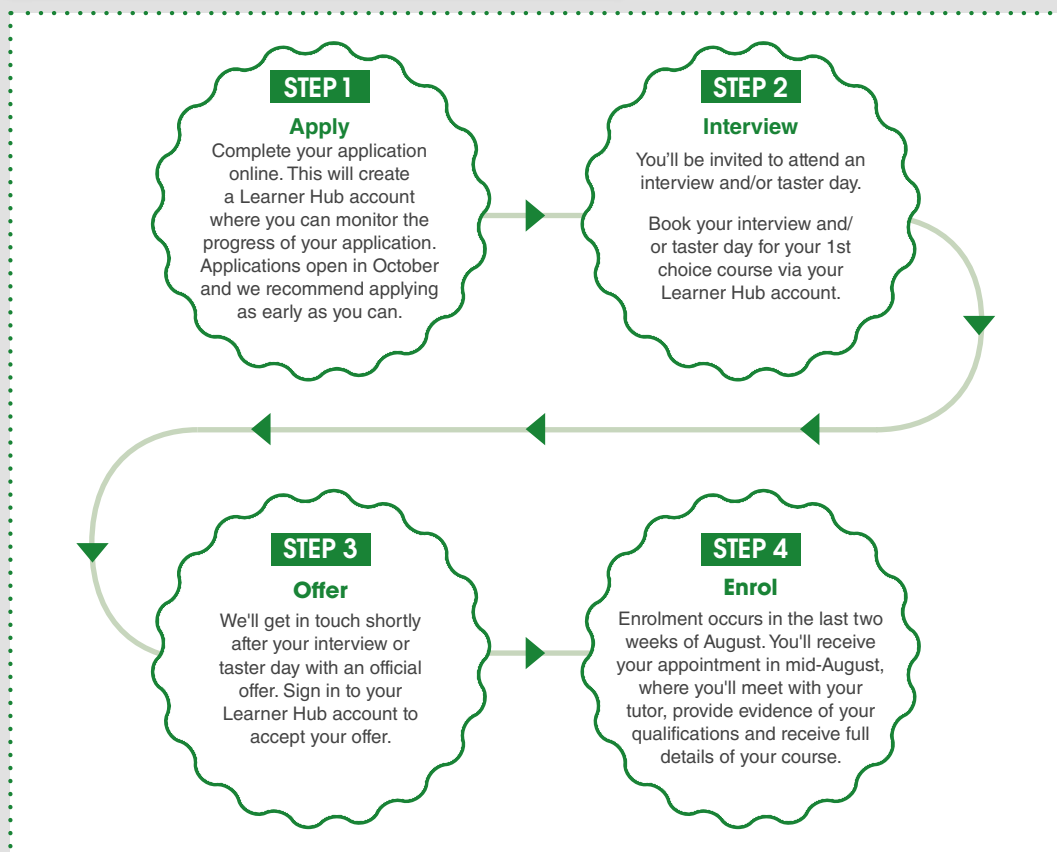
Find out more at:
easton.ac.uk/adults



How to apply

Got a question about your application?

Get in touch with our Admissions Team at Easton College via admissions@easton.ac.uk or 01603 773 008



Apply online

Visit easton.ac.uk

International students

If you have come to live in the UK from overseas and would like to study here, please contact our International Adviser at international@ccn.ac.uk or +44 (0)1603 773 798 for help and guidance on how to apply.

Help you choose

If you are applying through "Help You Choose" via your school, you will be emailed a link to create your personal Learner Hub account.

Remember to keep your login details safe.

Please use this to monitor your application and book your interview and/or taster day.



Easton College Open Events

11 October 2024 - 5pm - 7:30pm

12 October 2024 - 10am - 1pm

28 June 2025 - 10am - 1pm

City College Norwich Open Events

4 October 2024 - 5pm - 7:30pm

5 October 2024 - 10am - 1pm

21 June 2025 - 10am - 1pm

Paston College Open Events

26 September 2024 - 4:30pm - 7pm

9 November 2024 - 10am - 1pm

19 June 2025 - 4:30pm - 7pm

Contact us

Easton College

Easton College
Bawburgh Road
Norwich
NR9 5DU

t: +44 (0)1603 731 200

e: eastoninfo@ccn.ac.uk

www.easton.ac.uk

Find us on social media

 [@easton_college](https://twitter.com/easton_college)

 [@easton_college](https://www.instagram.com/easton_college)

 [EastonCollege](https://www.facebook.com/EastonCollege)